

MAP-ECU3 USB Driver Installation Guide

Introduction

The MAP-ECU3 uses a USB port to connect with the host Windows PC. The MAP-ECU3 is powered from the USB port in order to configure the unit outside the vehicle. When +12V is applied to the MAP-ECU3, USB power is no longer required. This document describes the recommended installation process to ensure the driver is configured correctly. This process appears long but is quite simple and assures the user of trouble free installation. Although MAP-CAL3 currently uses the COM port driver provided with the USB interface, we also use other direct driver functions and future releases will move away from the COM port functionality altogether.

Drivers

Drivers are provided for the following versions of Microsoft™ Windows™:

1. Windows2000™
2. WindowsXP™
3. Windows Vista™
4. Windows7™

This document only covers Windows Vista but the process is similar for other versions of Windows.

Windows Vista Installation

DISCONNECT YOUR COMPUTER FROM THE INTERNET. If you do not disconnect your computer from the internet, it will automatically install generic FTDI drivers which are not correctly configured for the MAP-ECU3.

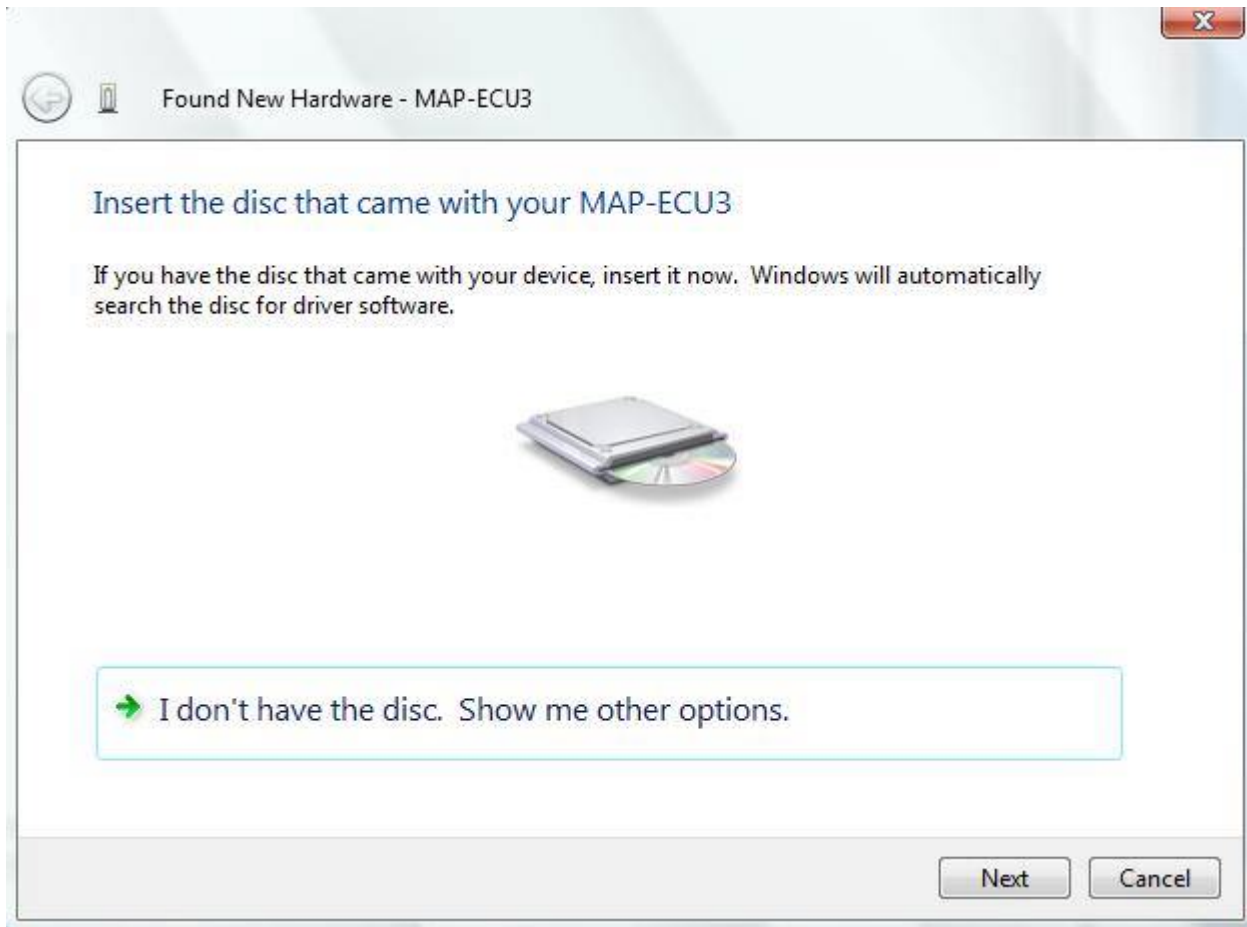
Step 1

Plug the MAP-ECU3 into a spare USB port of your computer using the USB cable supplied in the kit. The following screen should appear:



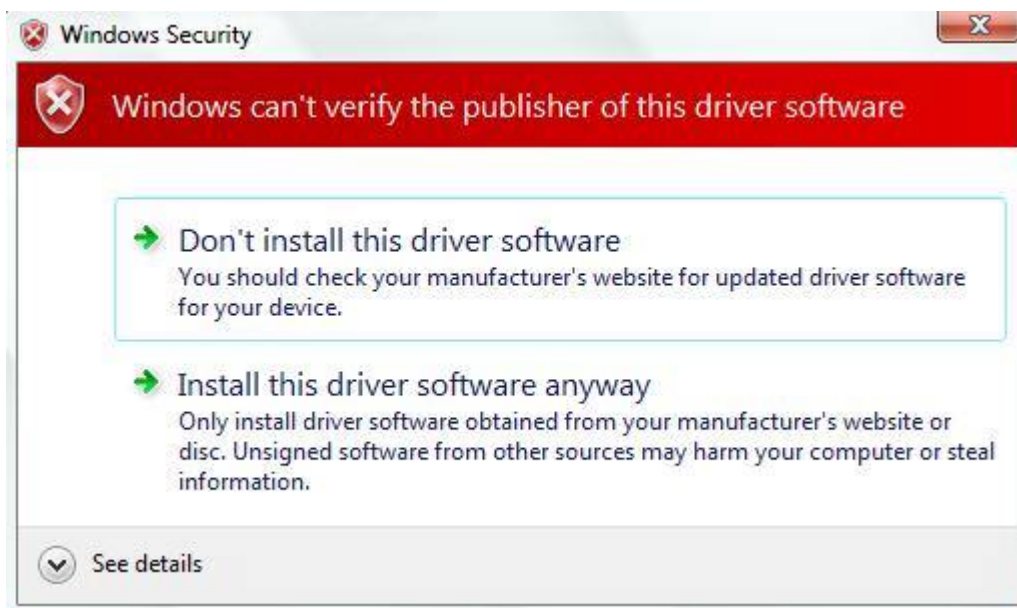
Step 2

Select the option “Locate an install driver software (recommended)”. The following screen should appear:



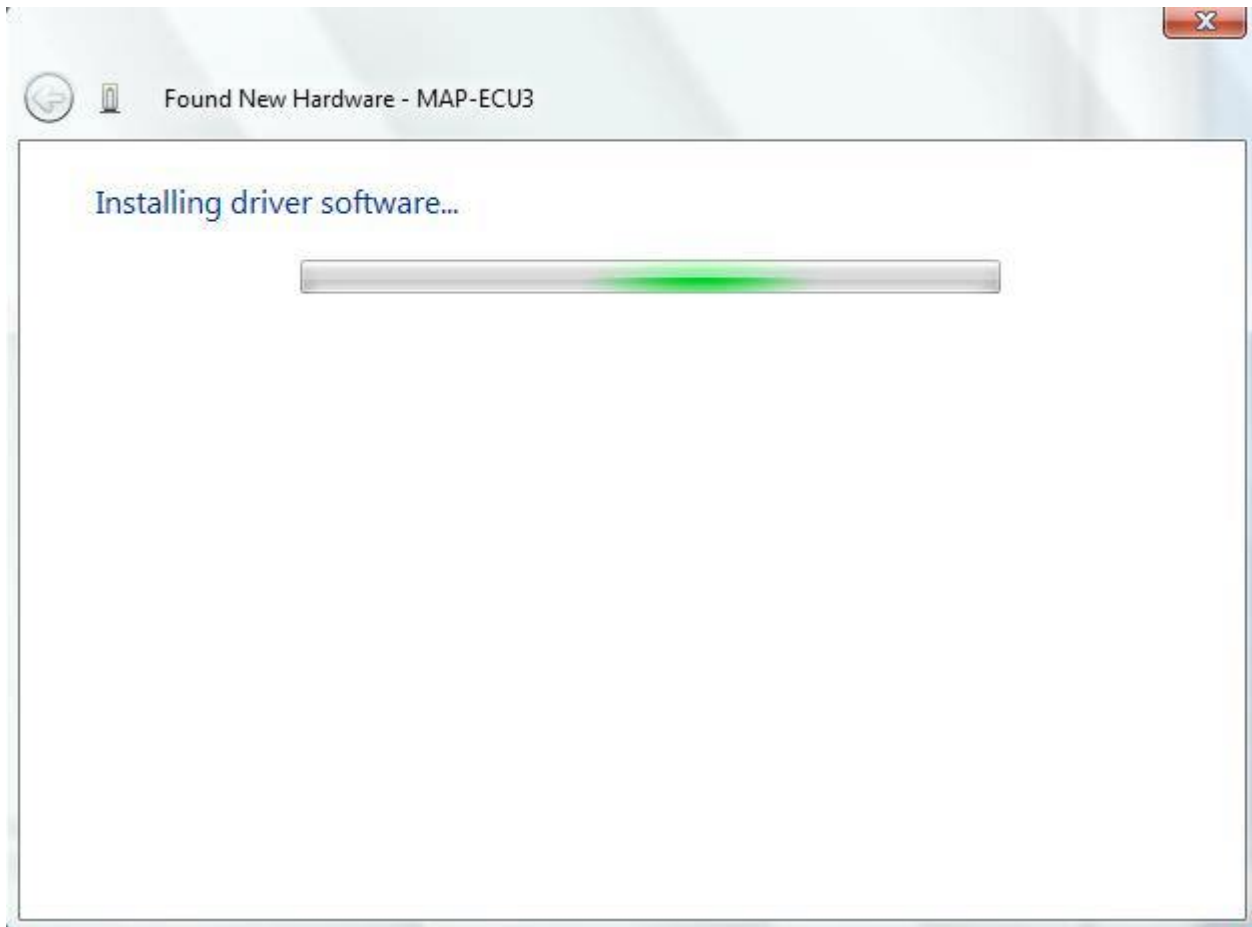
Step 3

Click “Next”. The following screen may appear, select “Install this driver software anyway”:



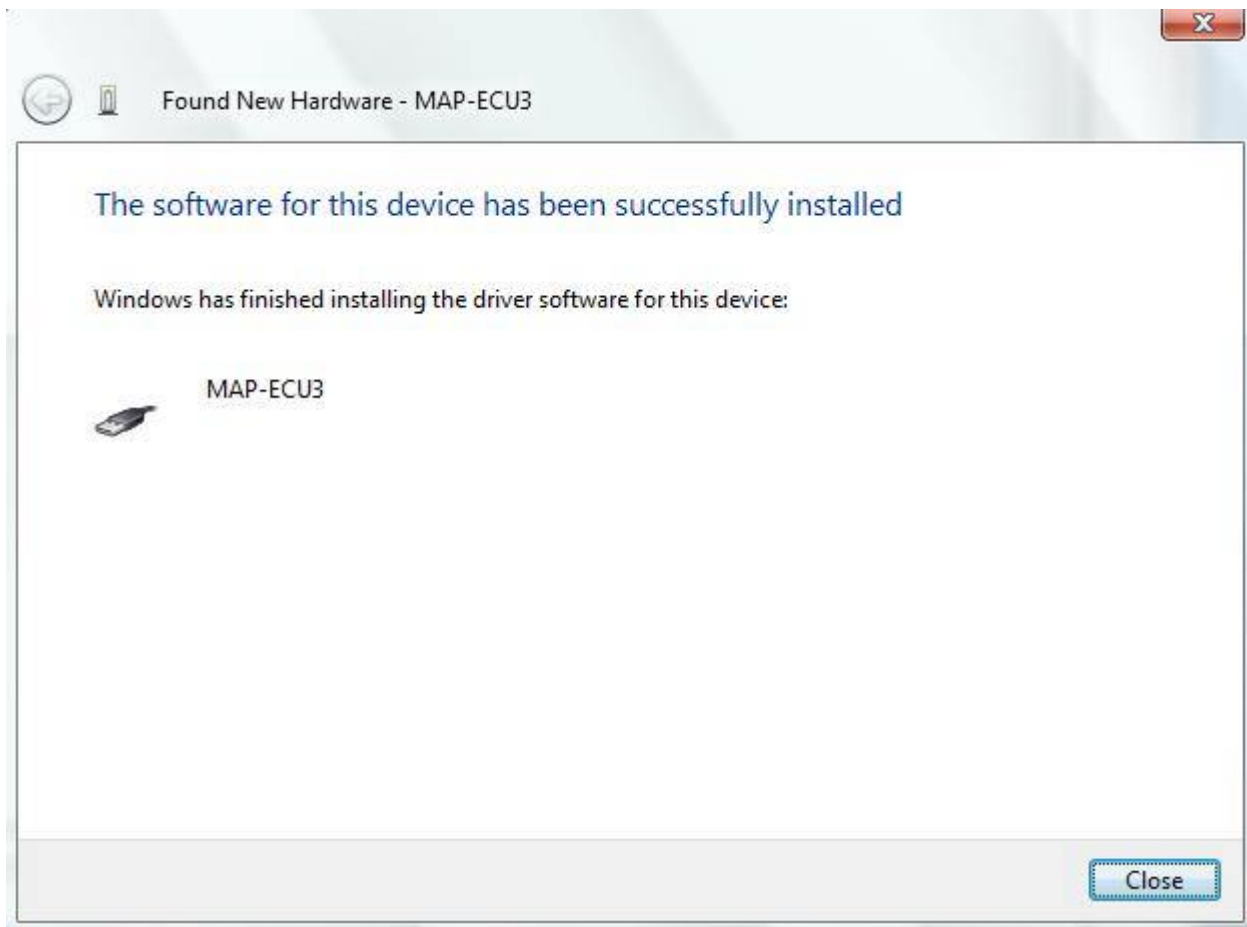
Step 4

The following screen should appear:



Step 5

When the driver is installed, the following screen should appear:



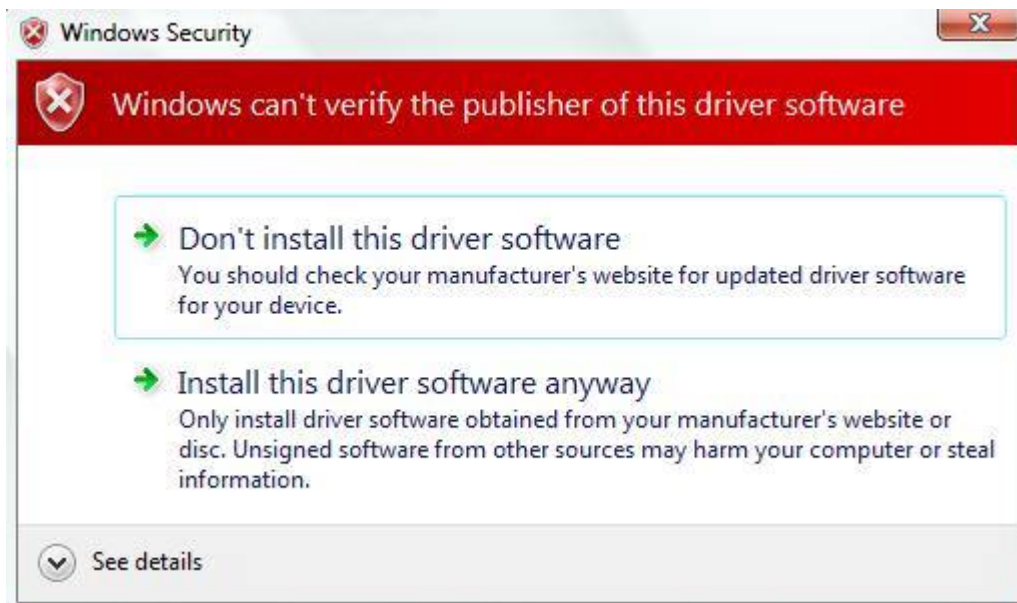
Step 6

Click "Close", the following screen should appear:



Step 7

Click "Next", the following screen may appear:



Step 8

When the driver installation has completed, the following screen should appear:

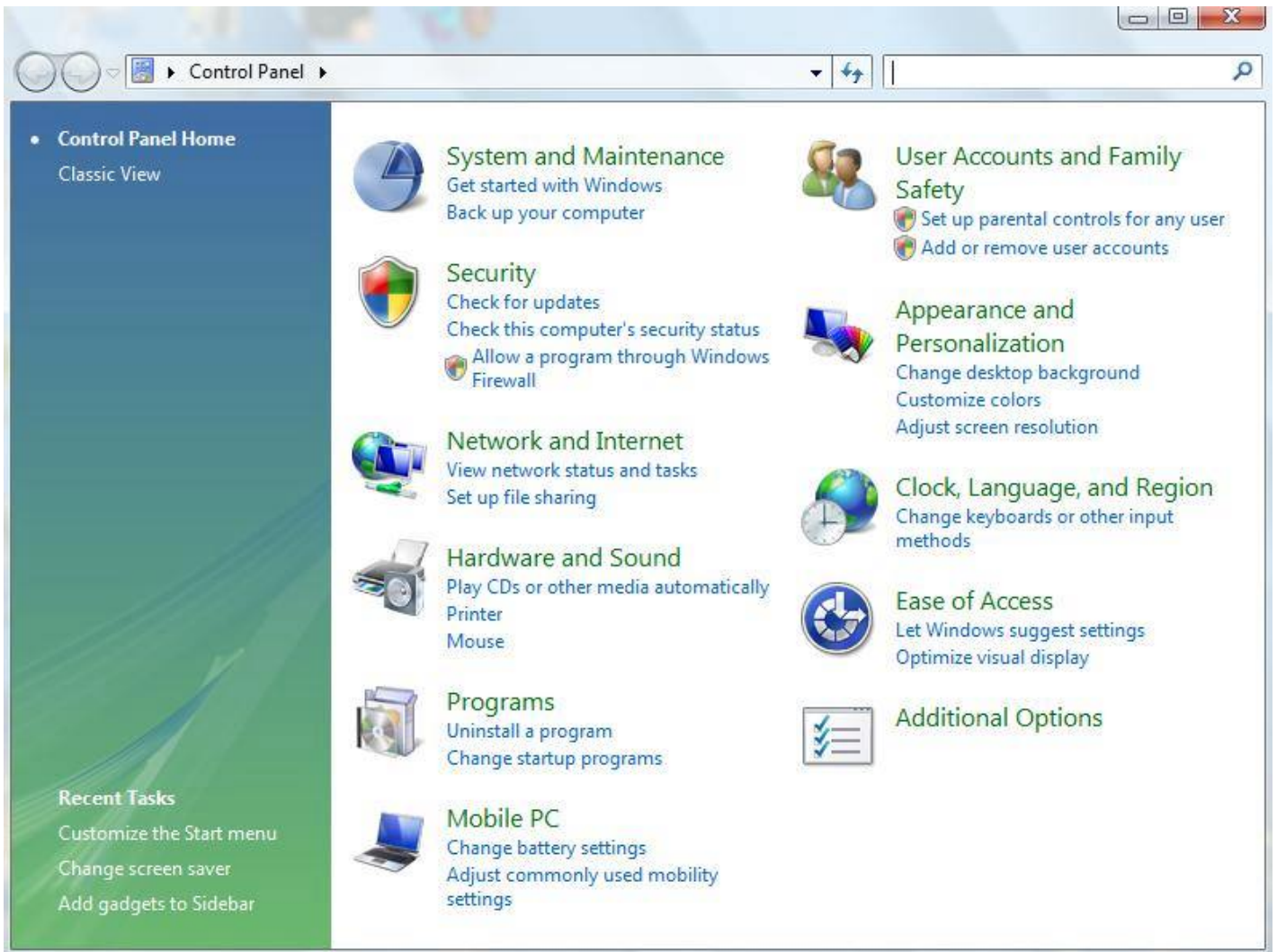


Step 9

Click "Close".

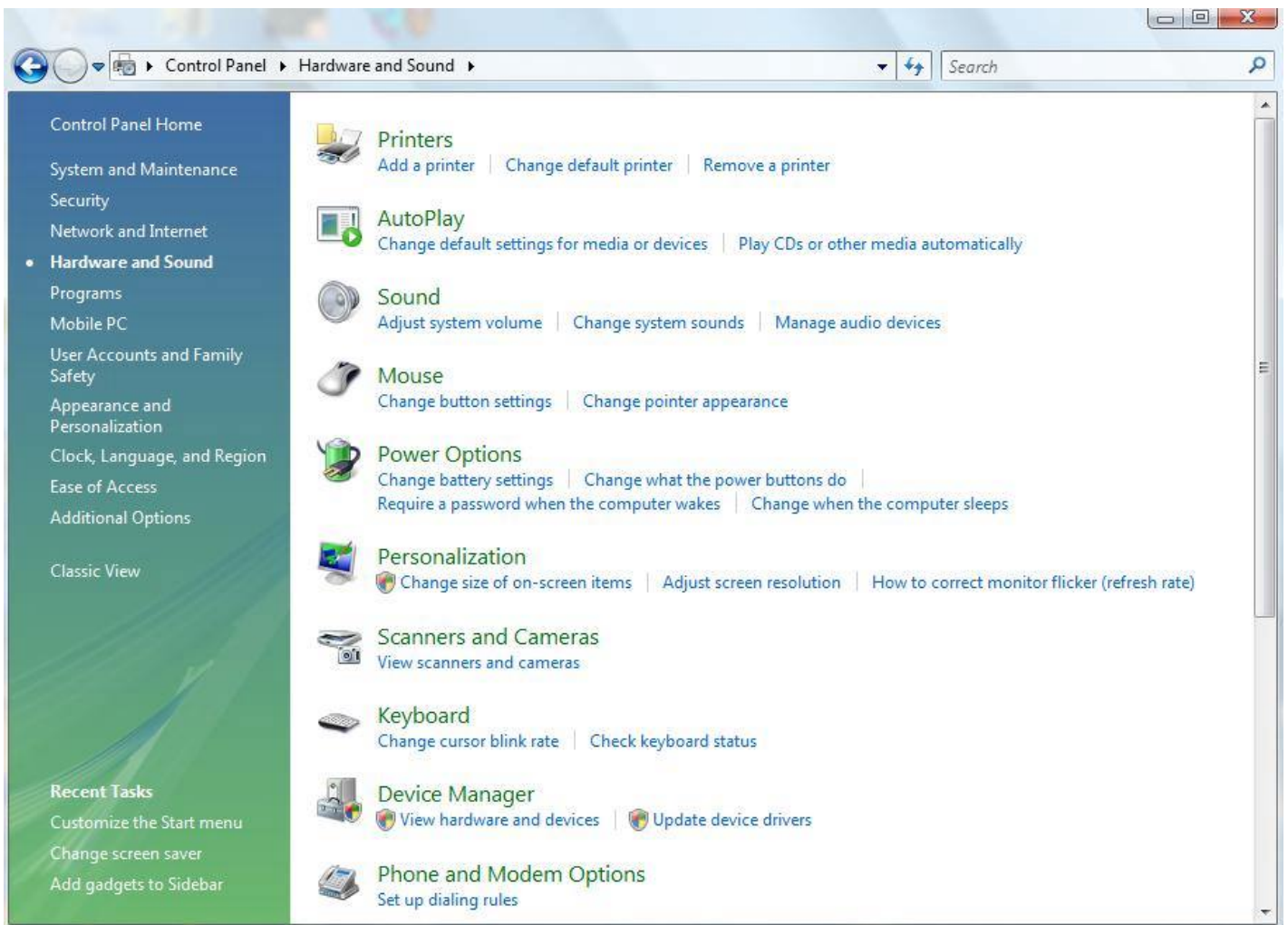
Step 10

From the Start Menu, open Control Panel and a screen like this should appear:



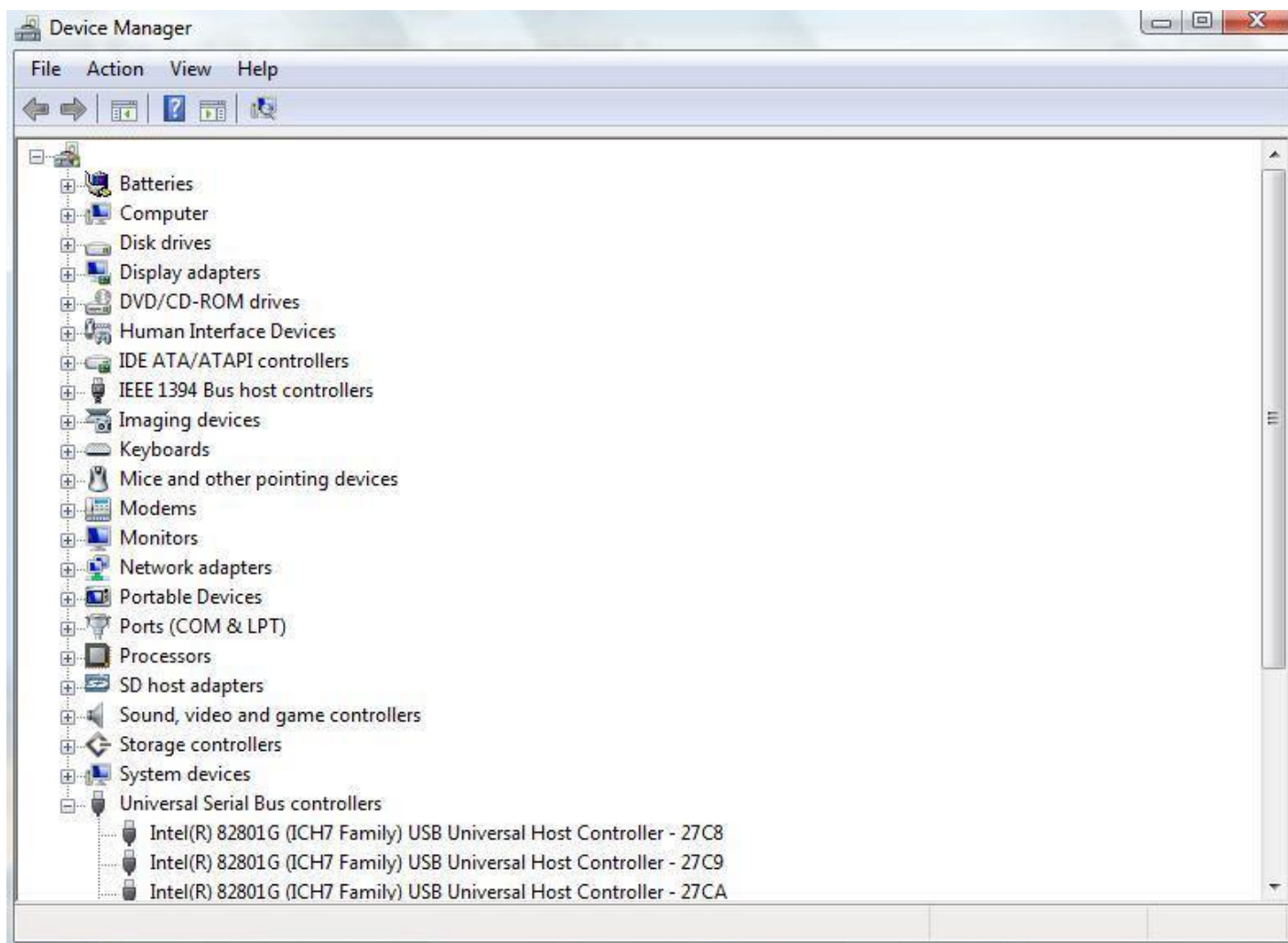
Step 11

Click “Hardware and Sound”. The following screen should appear:



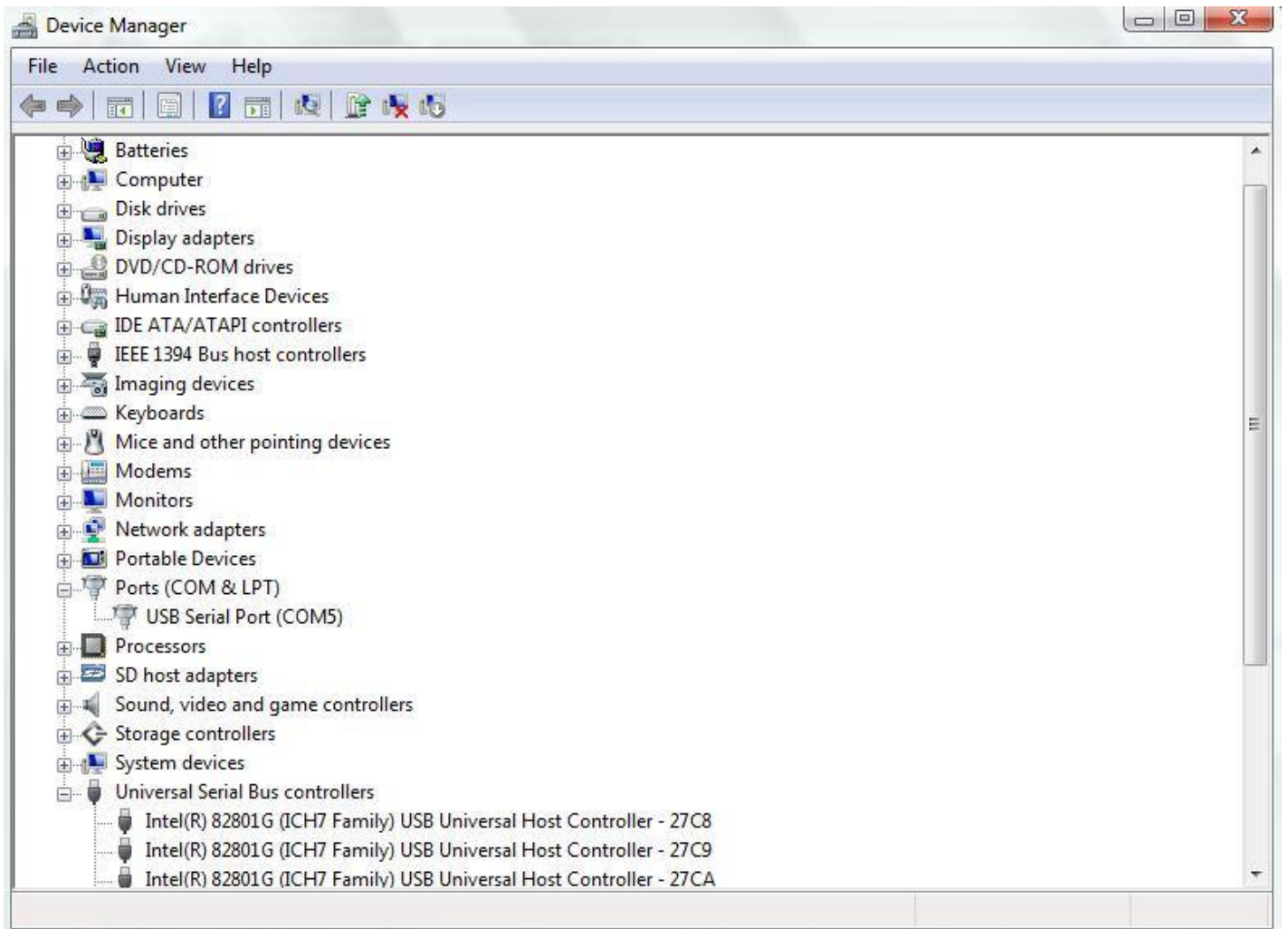
Step 12

Click “Device Manager”. The following screen should appear:



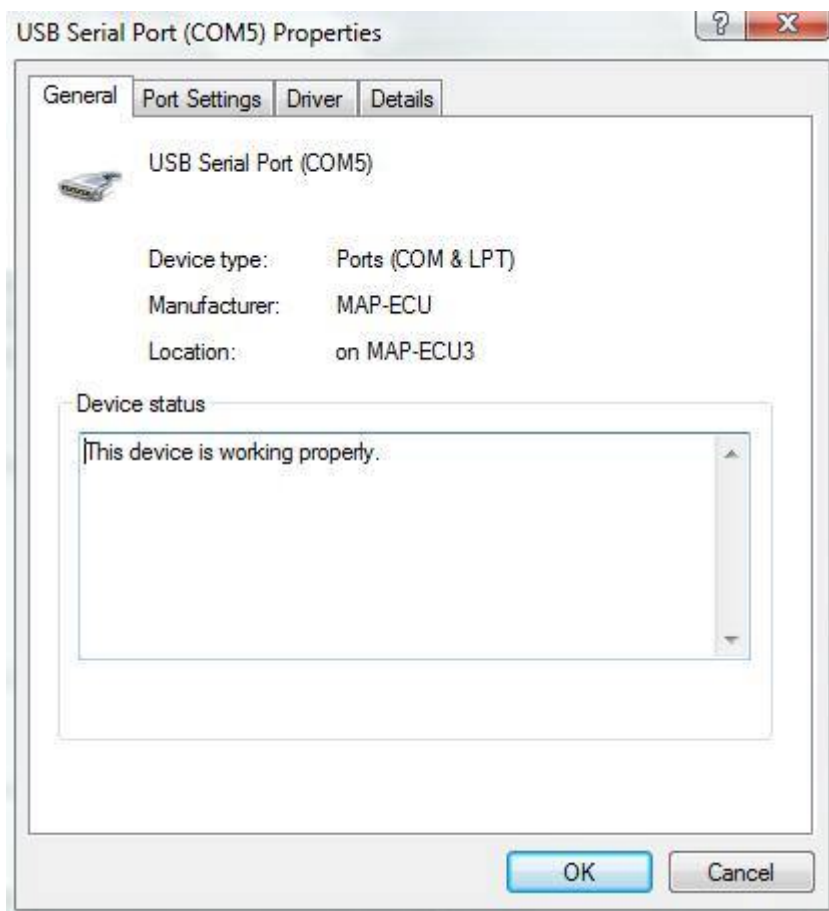
Step 13

Click the “+” symbol next to “Ports (COM & LPT)” and the following screen should appear:



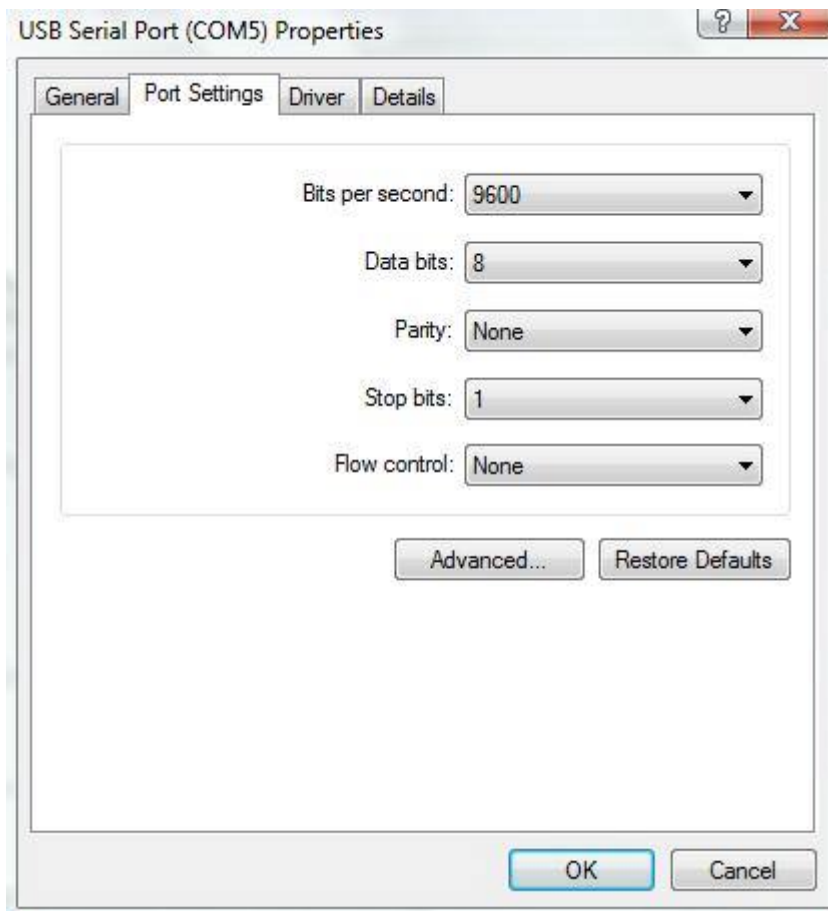
Step 14

“Double click” USB Serial Port (COM5) and the following screen will appear:



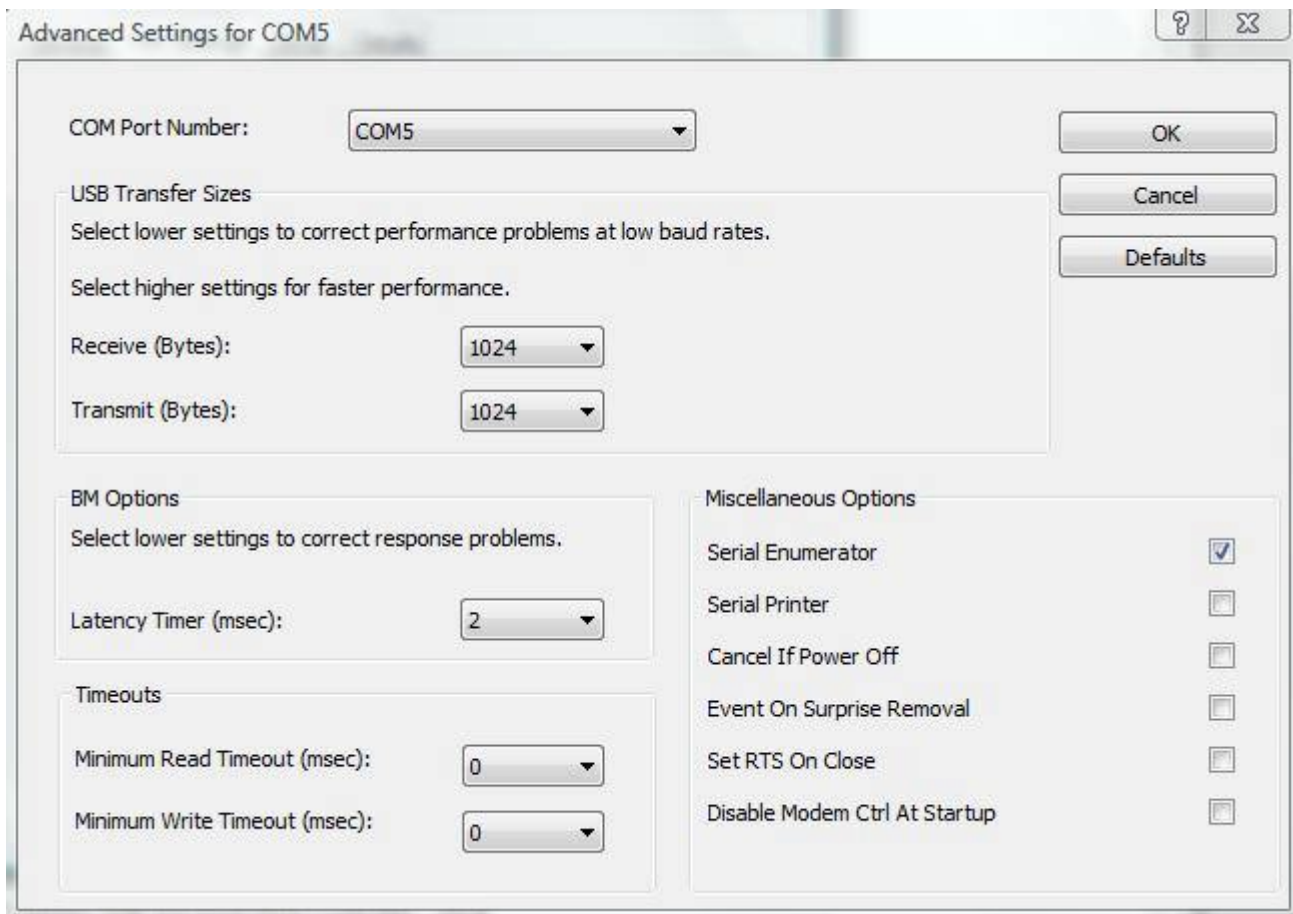
Step 15

Select “Port Settings” and the following screen should appear:



Step 16

Select the “Advanced” tab and the following screen should appear:



Important

Make sure the parameters on the screen above match your settings to ensure fast and reliable operation. When this installation process is followed, the files from the MAP-CAL3 CDROM should automatically configure these parameters.

The most important parameters are as follows:

- Receive (Bytes): 1024
- Transmit (Bytes): 1024
- Latency Timer (msec): 2

If any of these parameters are different, change them and press “OK” to save the settings. If the MAP-ECU3 connection appears slow, it is probably due to these parameters.

Step 17

Click “OK”. Your MAP-ECU3 USB driver is installed and ready to use.

Step 18

Run MAP-CAL3 and press the “Connect” button. If the following error message appears, the USB driver has not been correctly installed or there is a problem with the unit:



When the USB drivers have been installed correctly, MAP-CAL3 will automatically detect the MAP-ECU3 when “Connect” is pressed and read the current base table or upload your selected base table.

Summary

Thank you for purchasing MAP-ECU3, we hope you enjoy many years of successful engine tuning.

For further information on MAP-ECU3 and our other products, please visit our website:

www.mapecu.com

For technical support, please register and use our Forum: www.mapecu.com/forum