

MAP-ECU3 USB Driver Installation Guide

Introduction

The MAP-ECU3 uses a USB port to connect with the host Windows PC. The MAP-ECU3 is powered from the USB port in order to configure the unit outside the vehicle. When +12V is applied to the MAP-ECU3, USB power is no longer required. This document describes the recommended installation process to ensure the driver is configured correctly. This process appears long but is quite simple and assures the user of trouble free installation. Although MAP-CAL3 currently uses the COM port driver provided with the USB interface, we also use other direct driver functions and future releases will move away from the COM port functionality altogether.

Drivers

Drivers are provided for the following versions of Microsoft™ Windows™:

1. Windows2000™
2. WindowsXP™
3. Windows Vista™
4. Windows7™

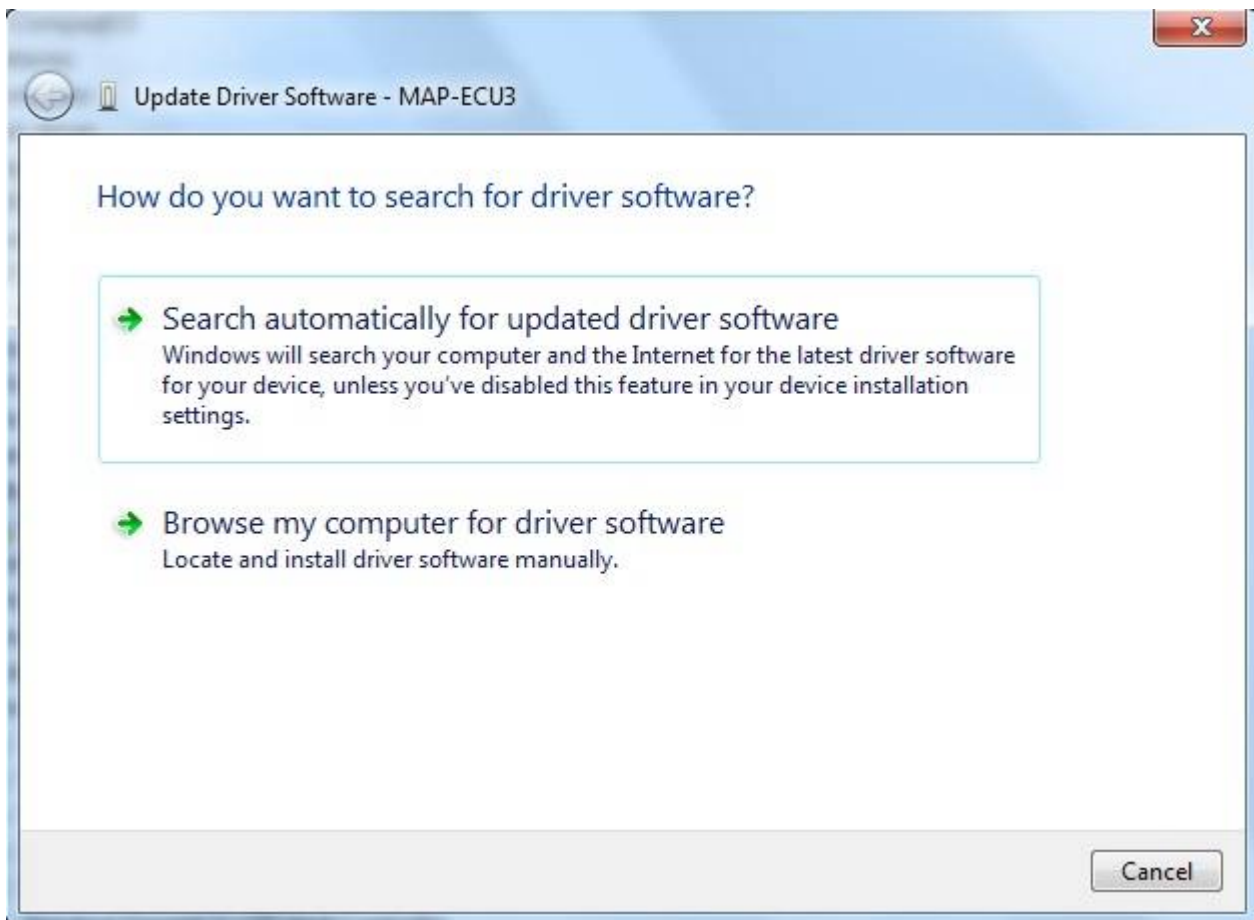
This document only covers Windows7 but the process is similar for other versions of Windows.

Windows7 Installation

DISCONNECT YOUR COMPUTER FROM THE INTERNET. If you do not disconnect your computer from the internet, it will automatically install generic FTDI drivers which are not correctly configured for the MAP-ECU3. The following steps should be followed to install the MAP-ECU3 USB drivers on Windows7.

Step 1

Insert the MAP-CAL3 CDROM and install MAP-CAL3 as per the MAP-CAL3 manual. Once installed, plug the MAP-ECU3 into a spare USB port of your computer using the USB cable supplied in the kit. The following screen should appear:



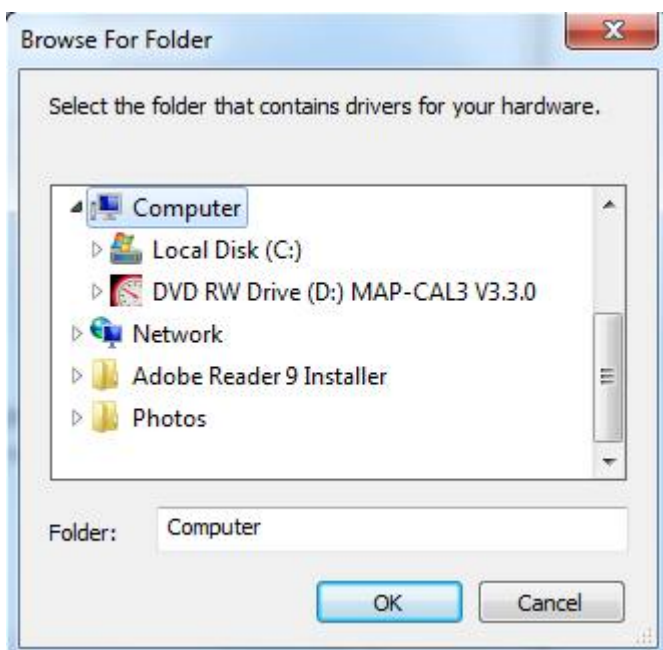
Step 2

Select “Browse my computer for driver software”. The following screen should appear:



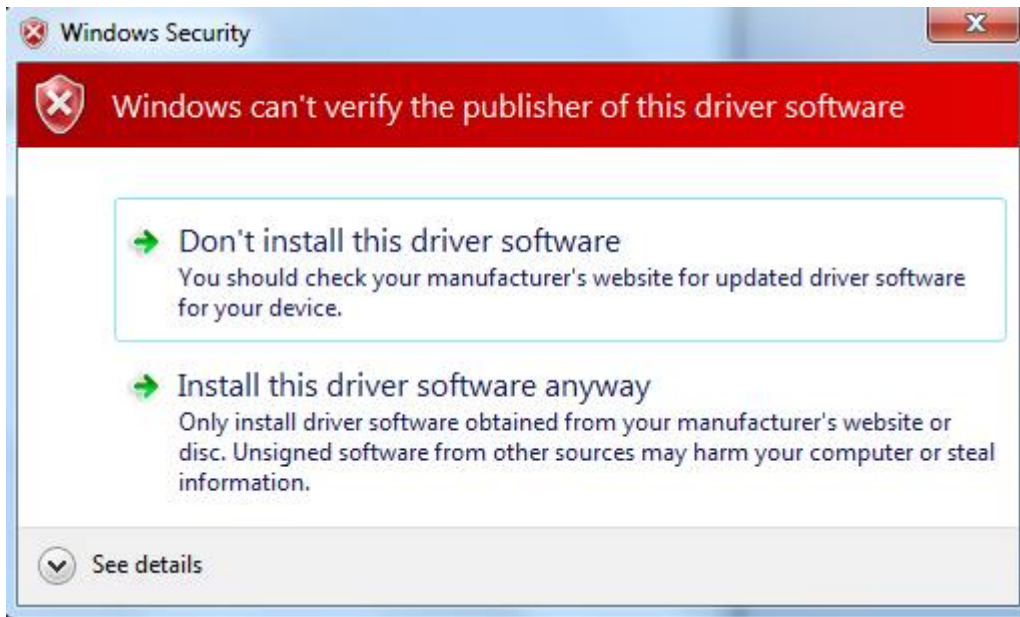
Step 3

Click “Browse” or enter the drive letter for the MAP-CAL3 CDROM drive. The following screen should appear:



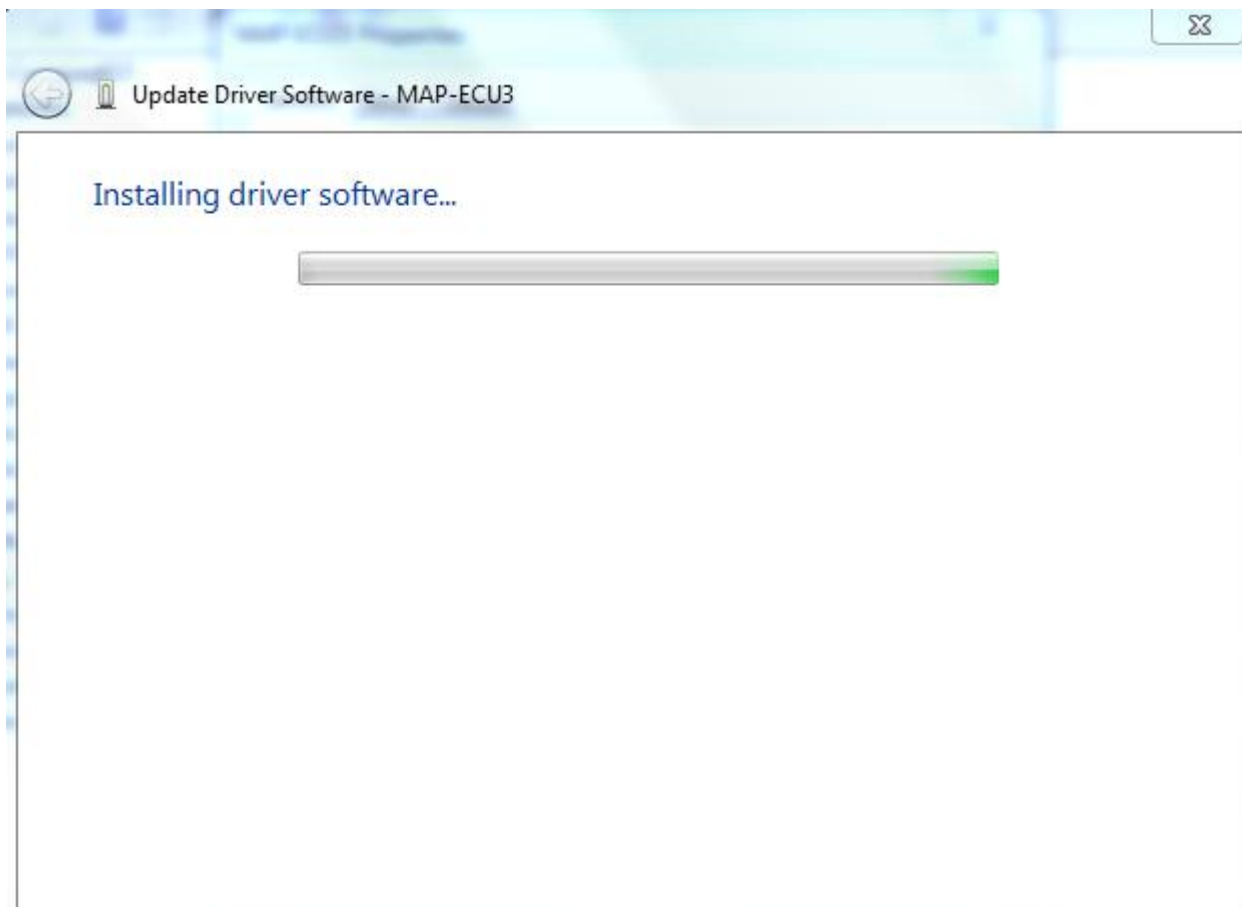
Step 4

Select the MAP-Cal3 CDROM and click “OK”. If the following screen appears, click “Install this driver software anyway.”:



Step 5

The following screen will appear as the drivers are being installed:

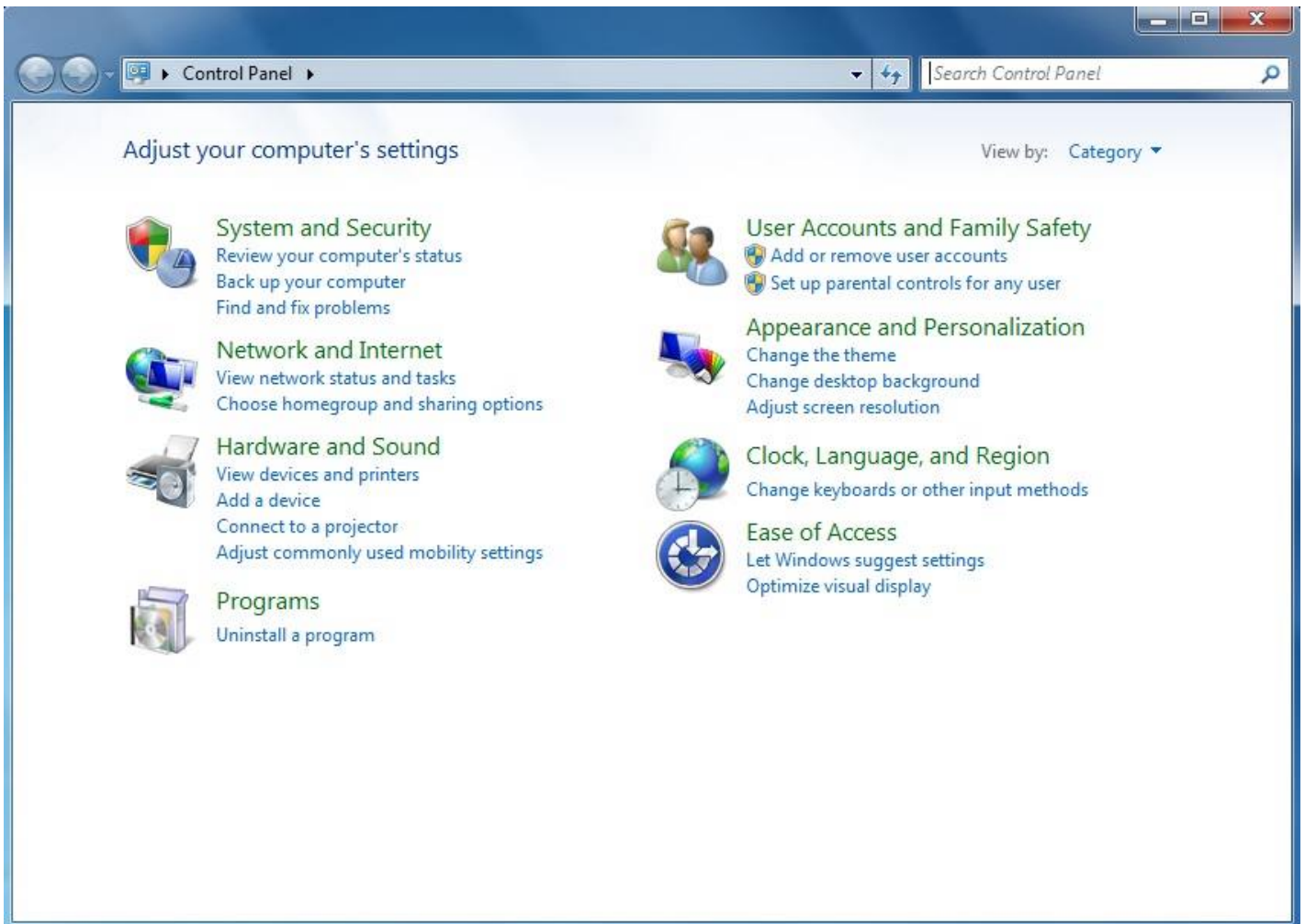


Step 6



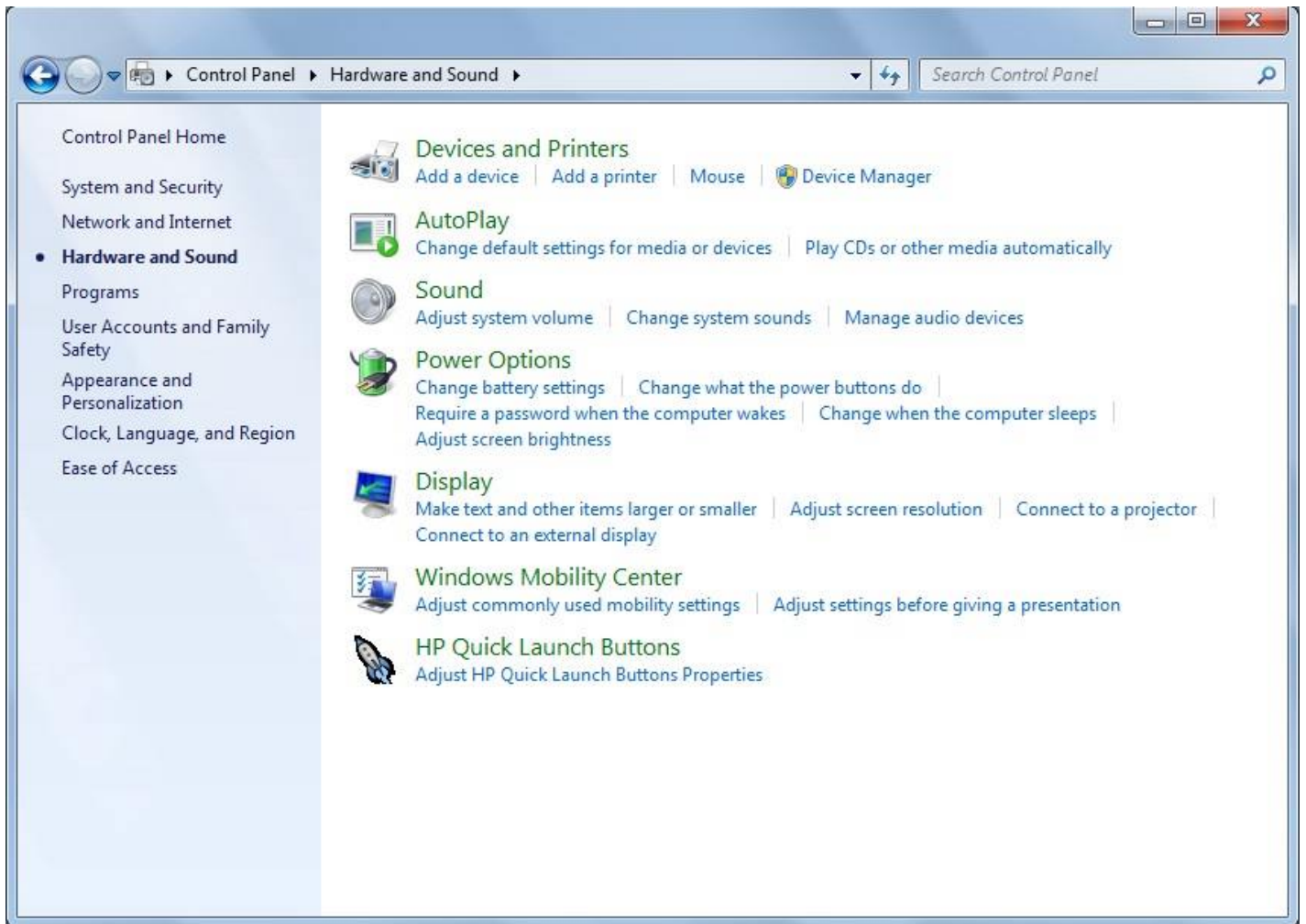
Step 7

From the Start Menu, open Control Panel and a screen like this should appear:



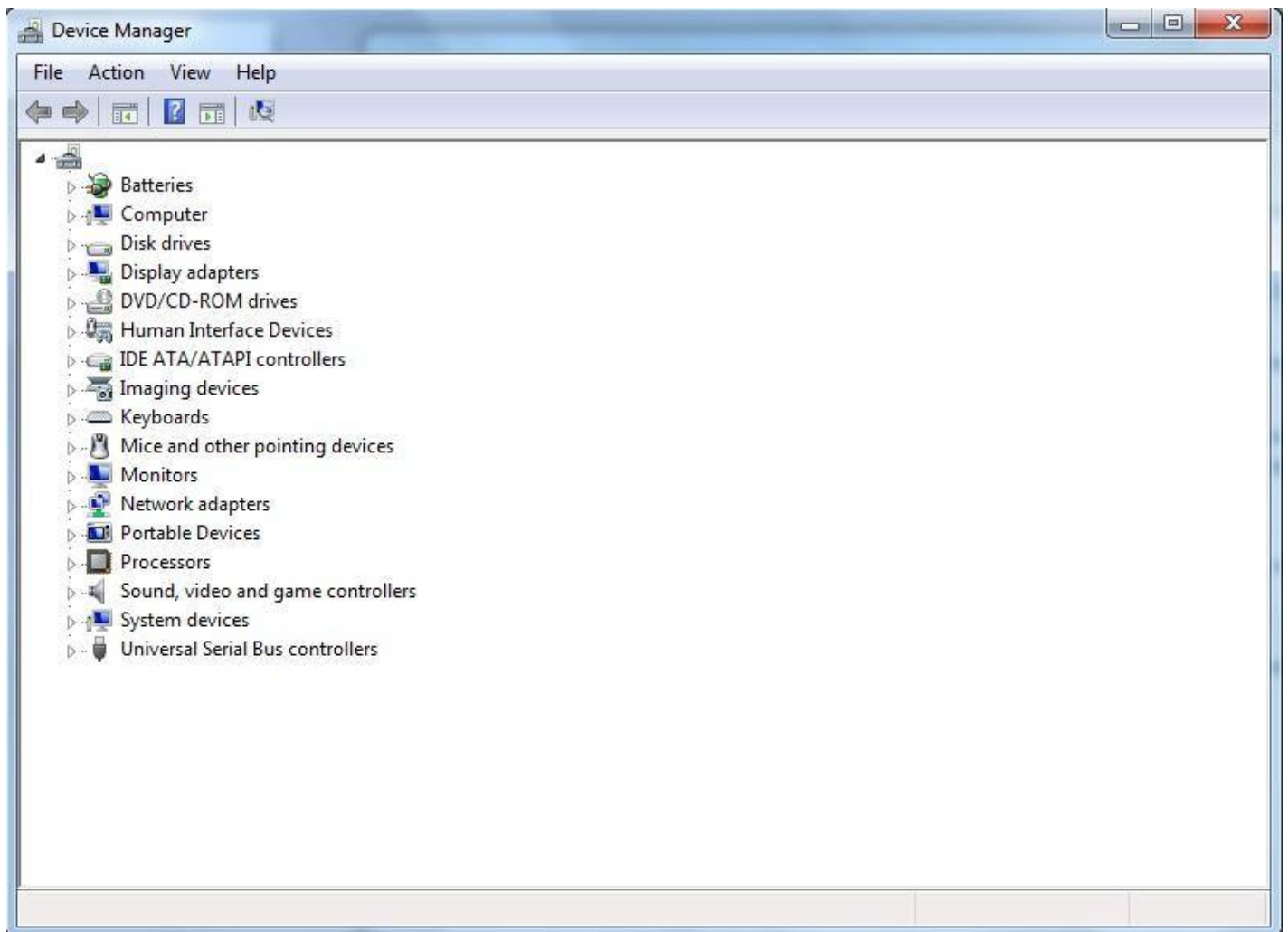
Step 8

Click “Hardware and Sound”. The following screen should appear:



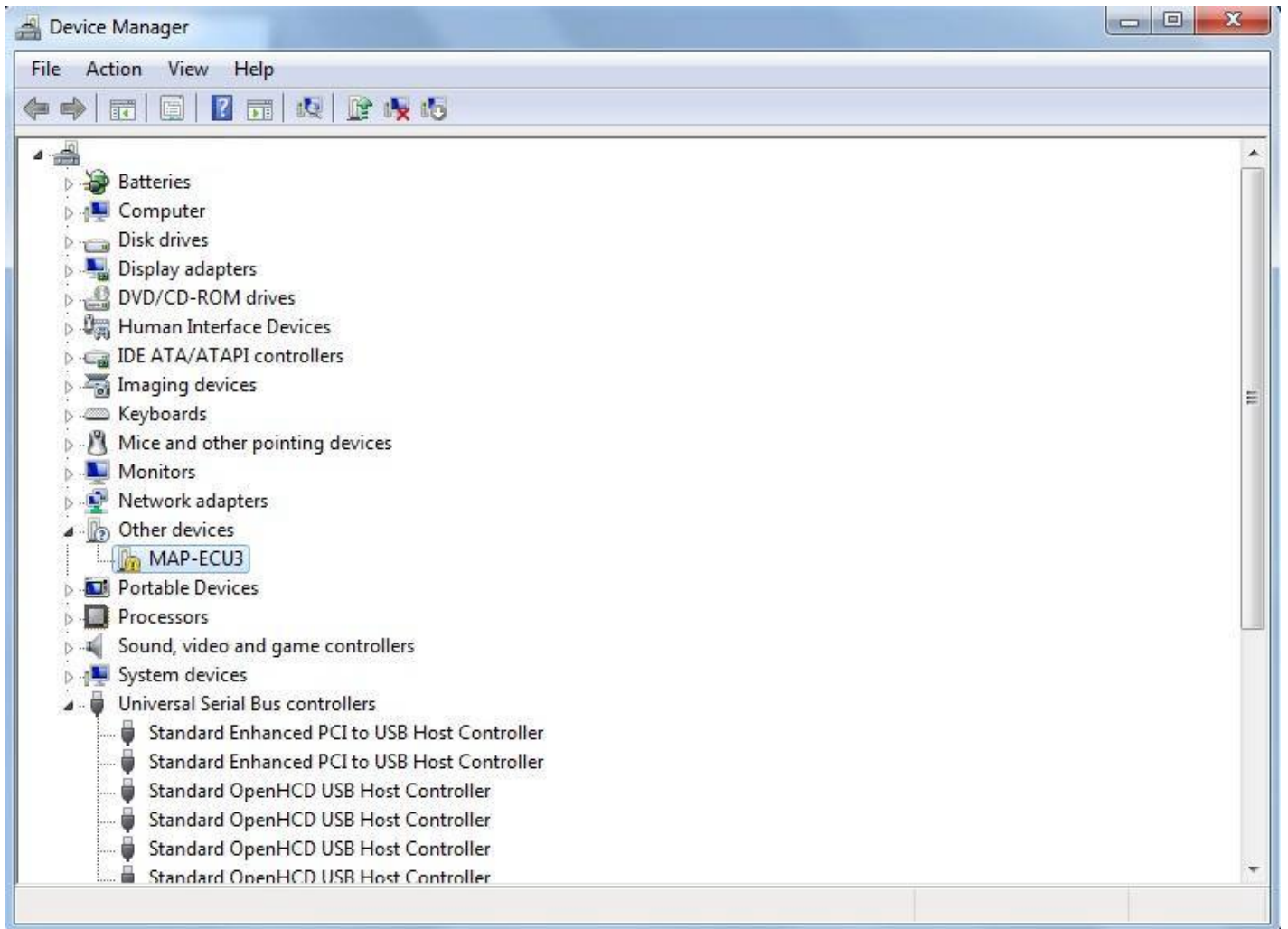
Step 9

Click “Device Manager”. The following screen should appear:



Step 10

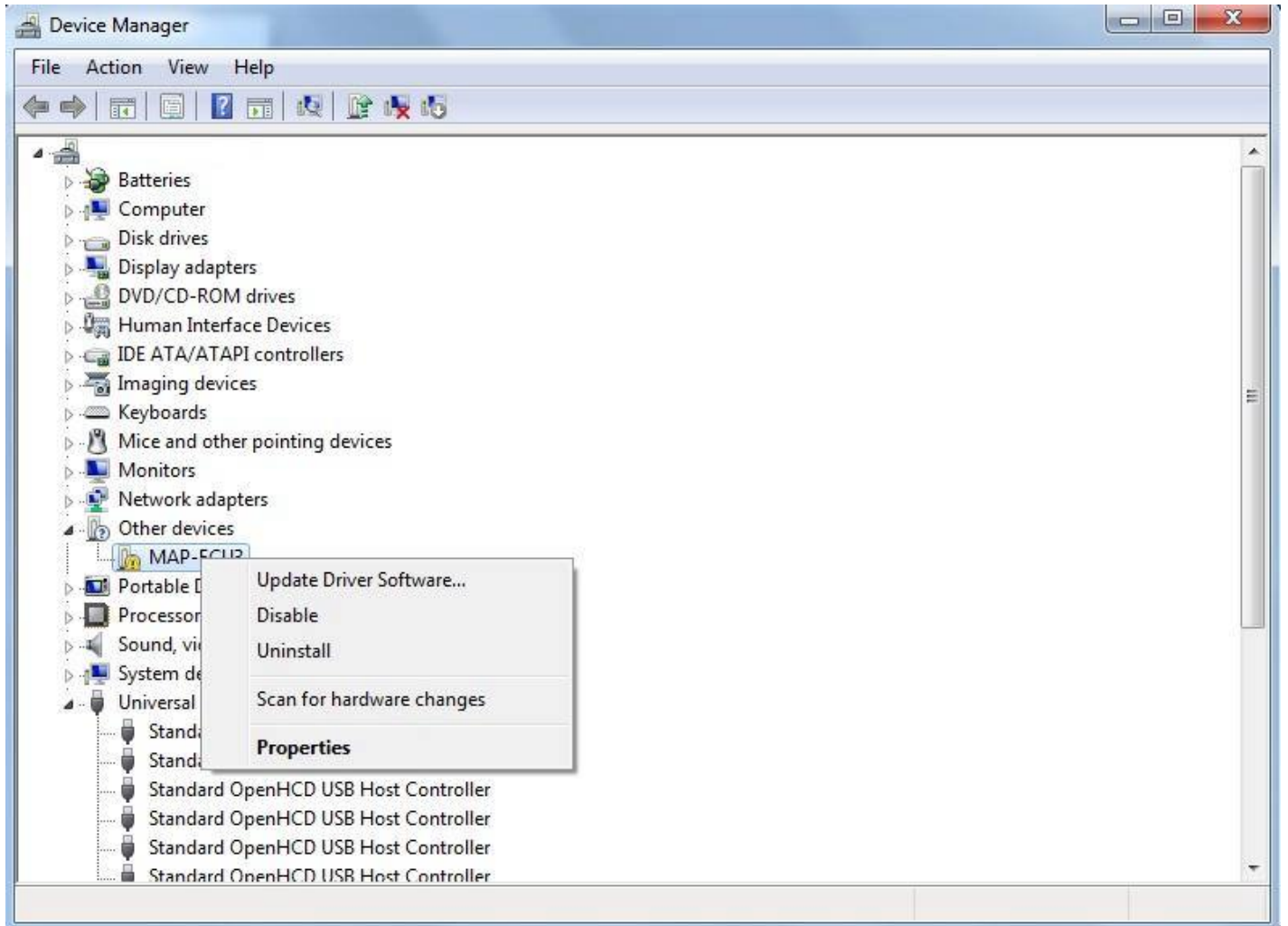
Click the “+” symbol next to “Other devices” and the following screen should appear:



Step 11

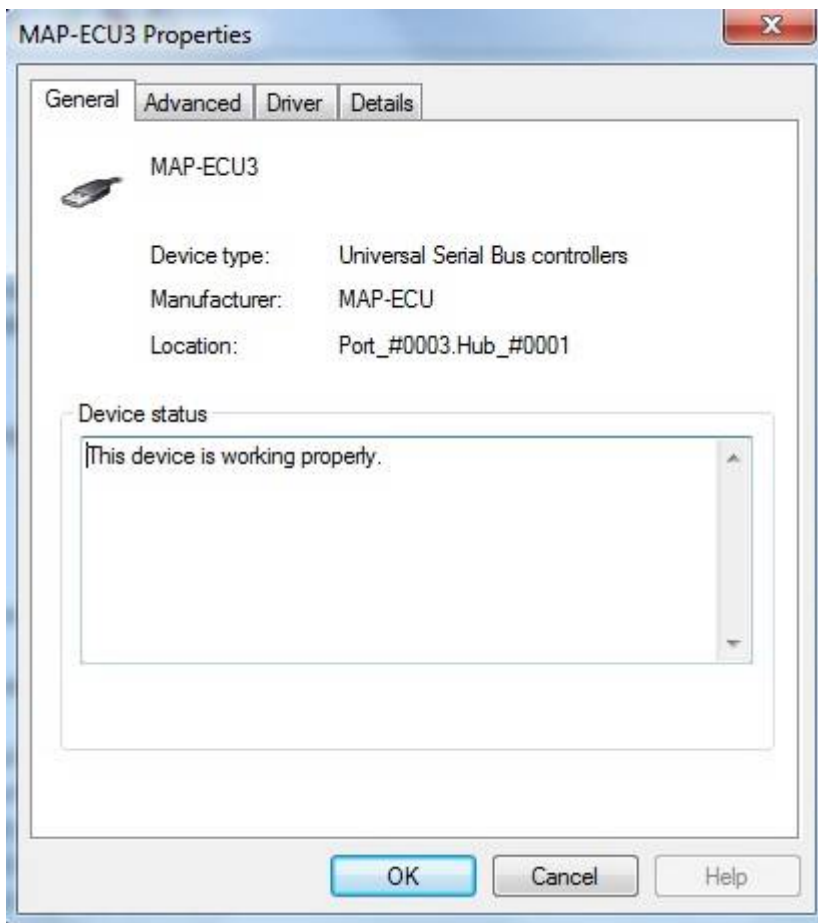
Step 12

Select “MAP-ECU3” and “right-click” to reveal the menu as per the following screen shot:



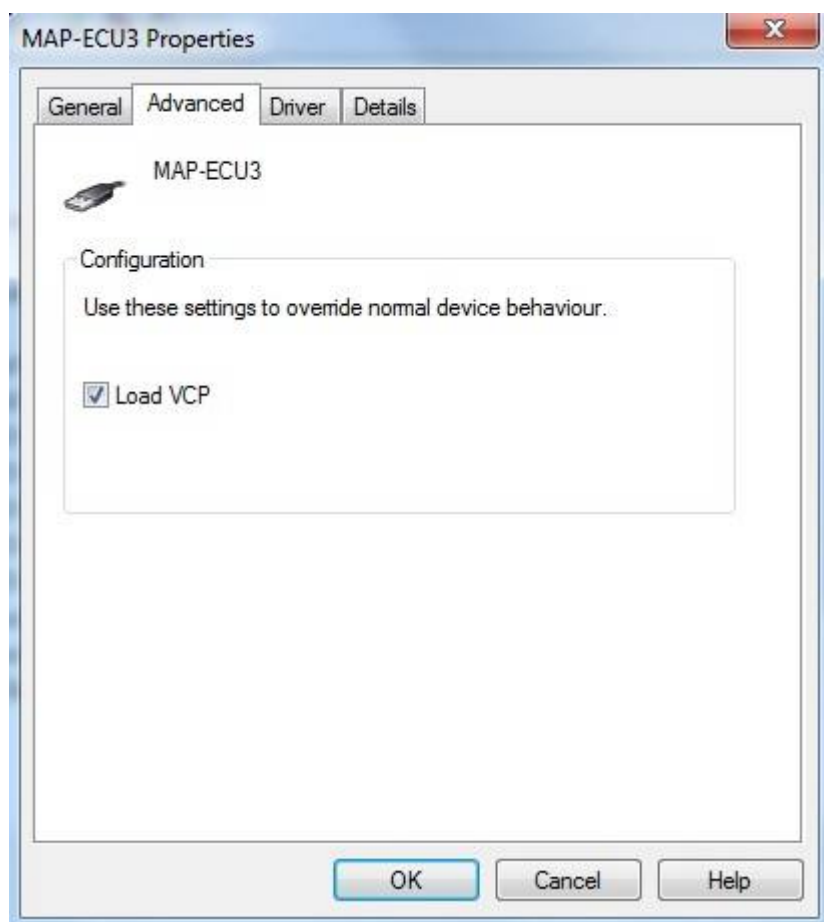
Step 13

Select "Properties" and the following screen should appear:



Step 14

Select the “Advanced” tab and the following screen should appear:

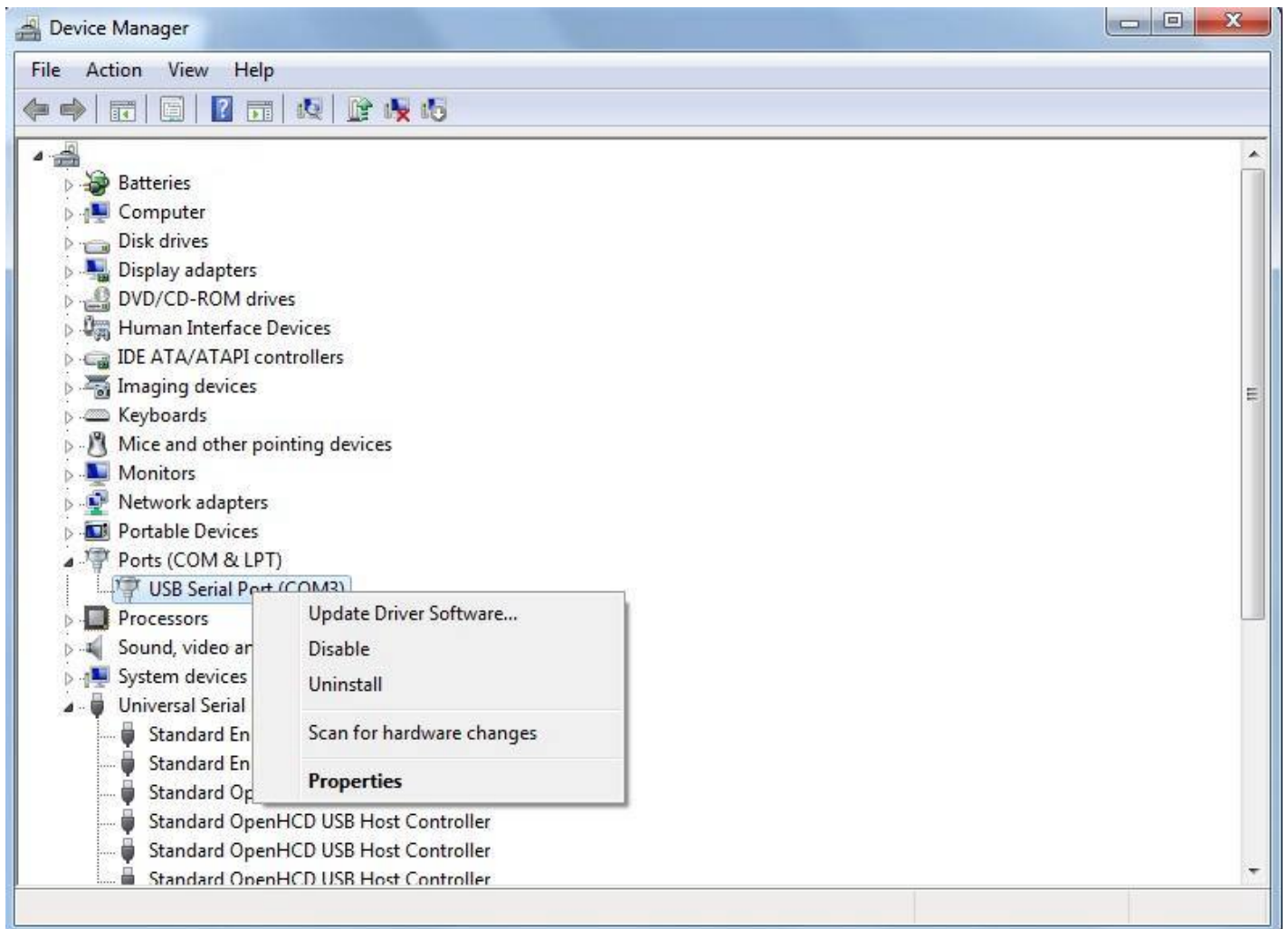


Step 15

Select the “Load VCP” checkbox and click “OK”.

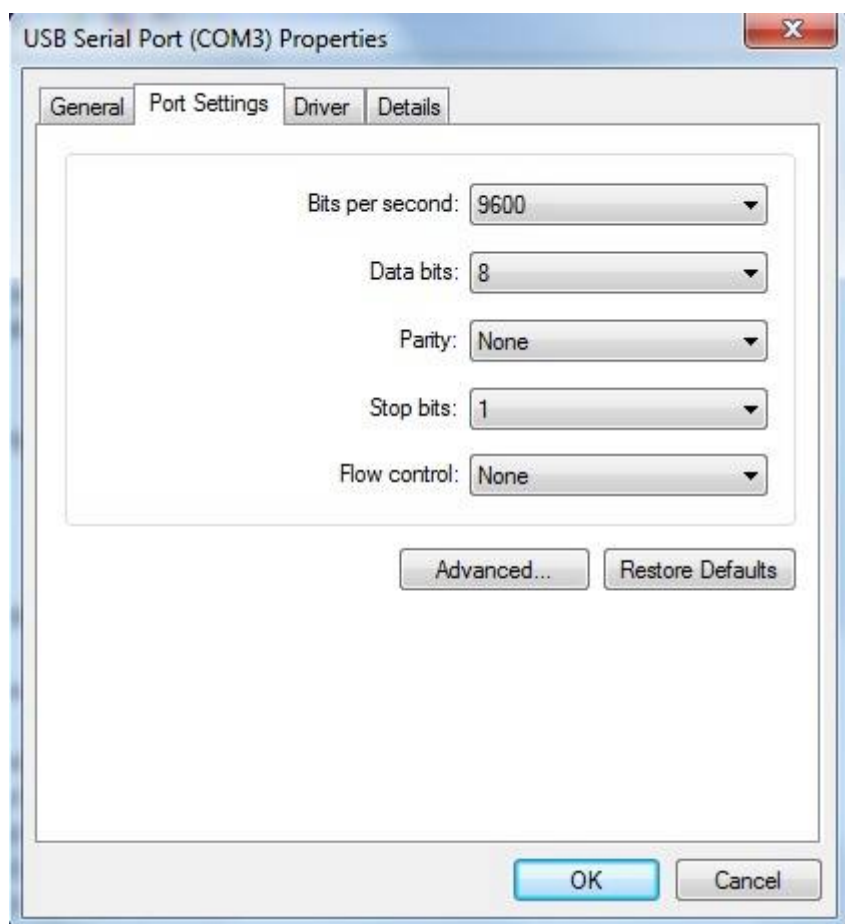
Step 16

Unplug the MAP-ECU3 USB cable, count to 20 and plug it back in again. The Device Manager screen should now show the COM ports as per this screen shot. Right-click the USB Serial Port to expose the menu:



Step 17

The following screen should appear, select the “Port Settings” tab:

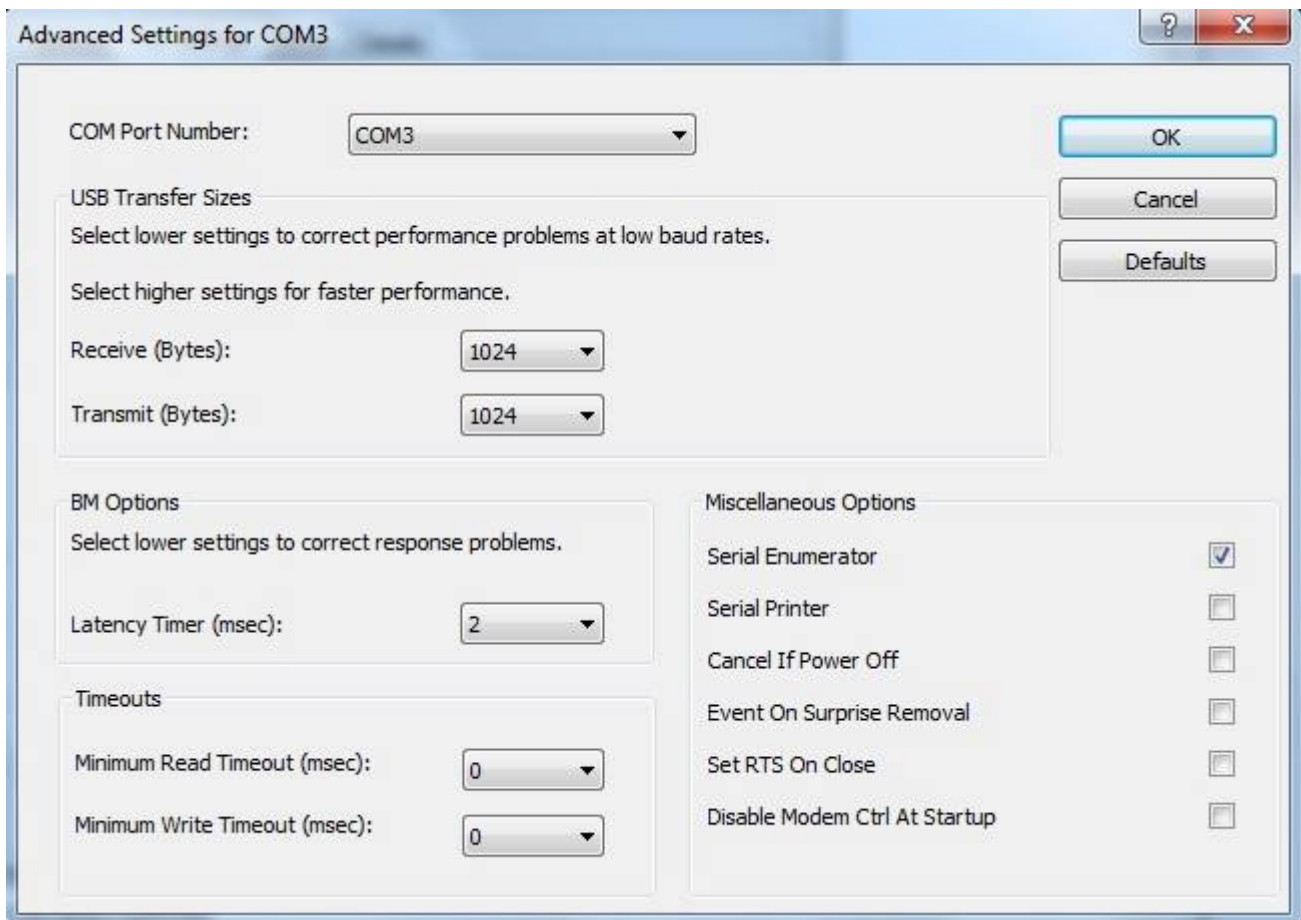


Step 18

Note: The COM port number will be different to the example above and does not make any different to operation. MAP-CAL3 detects the MAP-ECU3 automatically.

Step 19

Click the “Advanced” button and the following screen should appear:



Step 20

Important

Make sure the parameters on the screen above match your settings to ensure fast and reliable operation. When this installation process is followed, the files from the MAP-CAL3 CDROM should automatically configure these parameters.

The most important parameters are as follows:

- Receive (Bytes): 1024
- Transmit (Bytes): 1024
- Latency Timer (msec): 2

If any of these parameters are different, change them and press “OK” to save the settings. If the MAP-ECU3 connection appears slow, it is probably due to these parameters.

Step 21

Run MAP-CAL3 and press the “Connect” button. If the following error message appears, the USB driver has not been correctly installed or there is a problem with the unit:



When the USB drivers have been installed correctly, MAP-CAL3 will automatically detect the MAP-ECU3 when “Connect” is pressed and read the current base table or upload your selected base table.

Summary

Thank you for purchasing MAP-ECU3, we hope you enjoy many years of successful engine tuning.

For further information on MAP-ECU3 and our other products, please visit our website:

www.mapecu.com

For technical support, please register and use our Forum: www.mapecu.com/forum